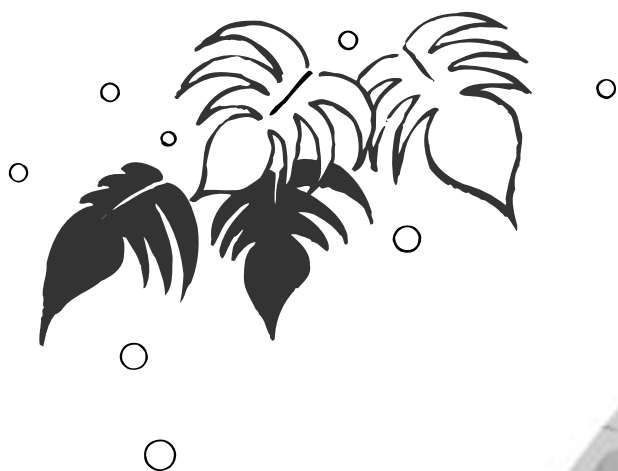


# PCR-262/CE-160

## Electronic Cash Register



### User's Manual

*START-UP is QUICK and EASY!*  
*Simple to use!*  
10 departments and 100 PLUs  
Automatic Tax Calculations  
Calculator function

**CASIO COMPUTER CO., LTD.**  
6-2, Hon-machi 1-chome  
Shibuya-ku, Tokyo 151-8543, Japan

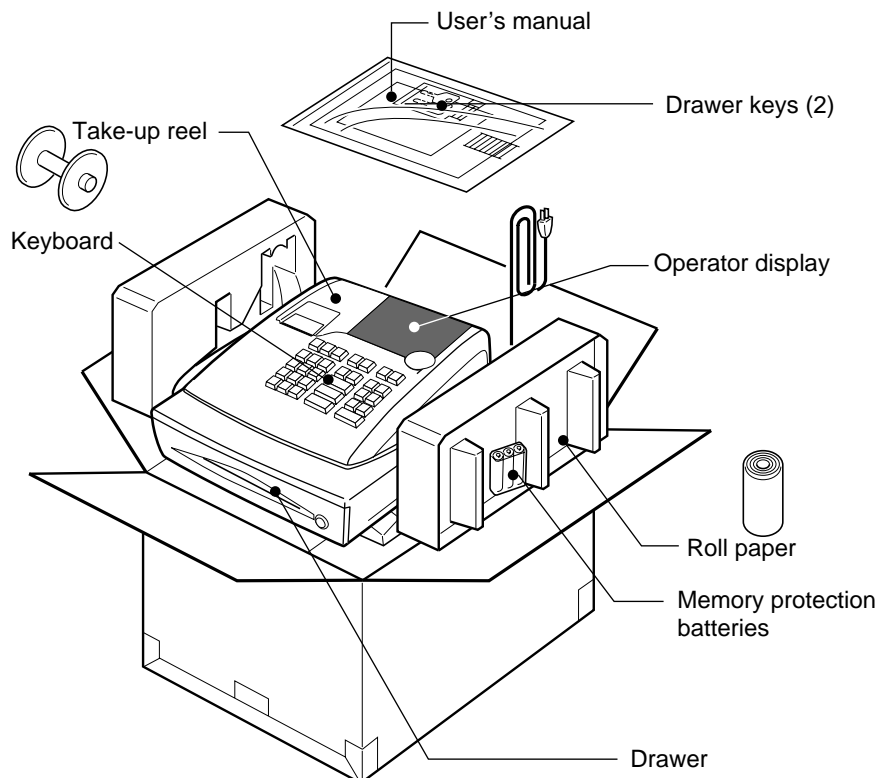
**CASIO**®  

# Contents

Getting to know your cash register .....	6
Daily Job Flow .....	8
<b>Part-1 QUICK START OPERATION .....</b>	<b>9</b>
(You can operate this ECR on a basic level by reading the following sections)	
1. Initialization .....	9
2. Loading Paper .....	10
3. Basic Programming for QUICK START – TIME/DATE .....	11
4. Basic Operation after Basic Programming .....	17
5. Daily Management Report .....	20
<b>Part-2 CONVENIENT OPERATION .....</b>	<b>22</b>
(Please keep these sections to expand your use.)	
1. Various Programming .....	22
2. Various Operations .....	31
<b>Part-3 CALCULATOR FUNCTION.....</b>	<b>38</b>
1. Calculator Mode .....	38
<b>Part-4 USEFUL INFORMATION .....</b>	<b>40</b>
1. Troubleshooting .....	40
2. Specifications .....	40
3. Warranty Card .....	41

## Before you start

### Unpacking



This is a “Table of Contents preview” for quality assurance

The full manual can be purchased from our store:

<https://the-checkout-tech.com/manuals/casio/PCR-262> and CE160 users and programm

And our free Online Keysheet maker:

<https://the-checkout-tech.com/Cash-Register-Keysheet-Creator/>

[HTTPS://THE-CHECKOUT-TECH.COM](https://THE-CHECKOUT-TECH.COM)